
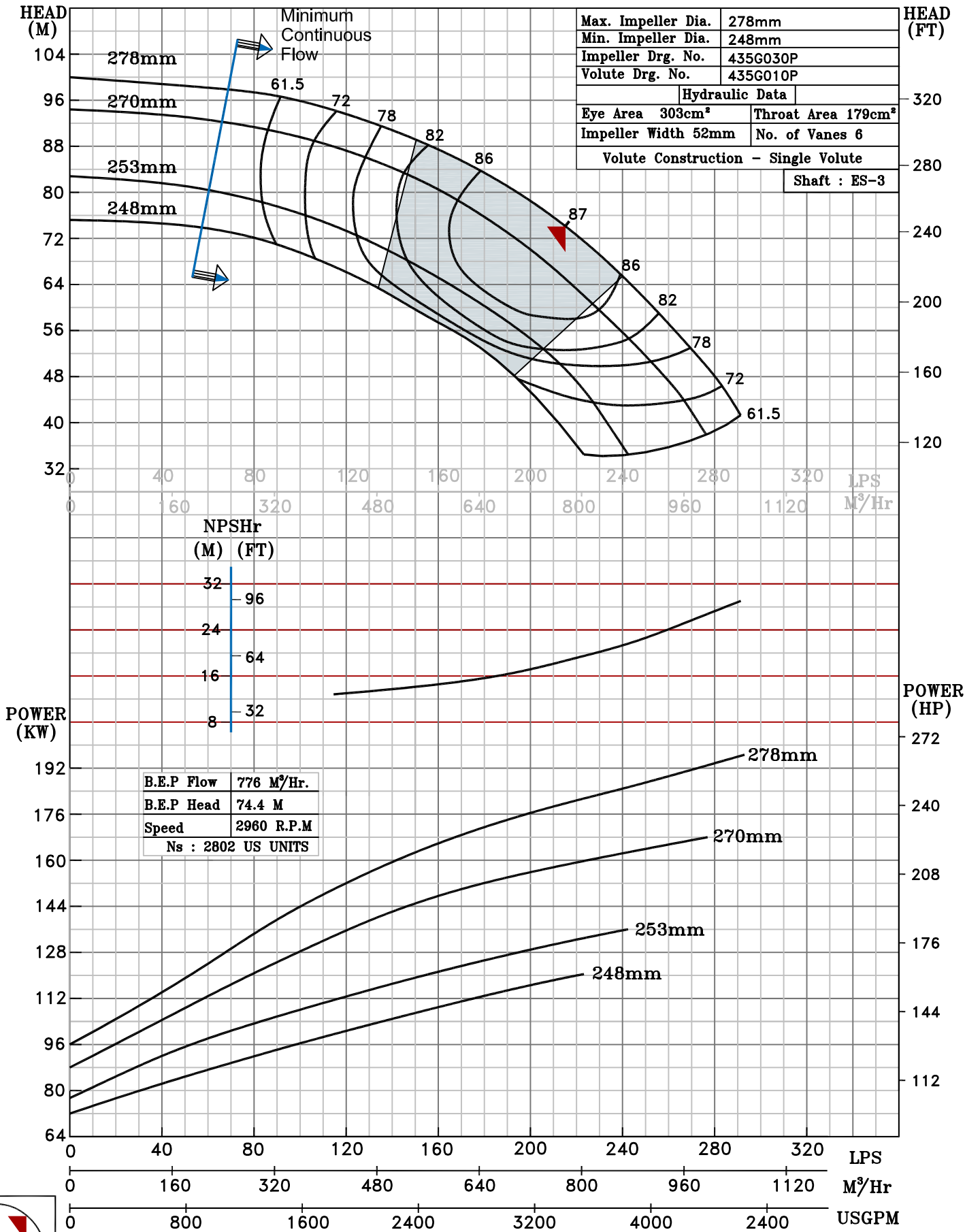


NOTE- PERFORMANCE AS PER ISO 9906 GRADE-2B

PERFORMANCE CURVE OF ES 150-250 @2960 R.P.M		ES 150-250/X/403552
 PUMPSENSE ISO 2858 ES RANGE	MODEL ES 150-250	WORKING PRESS. 16 bar
	SIZE 200x150-278	TEST PRESS. 24 bar
	TYPE - END SUCTION BACK PULL OUT	
		SPEED 2960 rpm

SHADED REGION ON THE H-Q CURVE REPRESENTS OPTIMUM SELECTION ZONE
 PUMP PERFORMANCE CHARACTERISTICS COMPUTED BASED ON CLEAN COLD WATER S.G 1.0



2960 RPM